



Rabbit anti CK-18(Non-phospho) Polyclonal Antibody

Alternative Name(s): Keratin 18; CK18

Order Information

- **Description:** Cytokeratin 18(Paired S33)
- **Catalogue:** 630-120
- **Lot:** See label
- **Size:** 100ug/200ul
- **Host:** Rabbit
- **Clone:** nan
- **Application:** IHC(P), WB
- **Reactivity:** Hu

ANTIGEN PREPARATION

A synthetic peptide surrounding to the epitope -SAASVYA- without phosphorylation site at Serine 33 of Cytokeratin 18 protein from human origin. It is identical among human, mouse, rat, etc

BACKGROUND

Keratin polypeptides 8 (basic keratin) and 18 (acidic keratin) exist in combination as K8/K18 which are the cytoskeletal intermediate filament proteins of hepatocytes while K8/K18/K19 are the keratins of hepatobiliary ductal cells. Hepatocyte K8/K18 are highly abundant and behave as stress proteins with injury-inducible expression. K8 and K18 are cytoprotective stress proteins that play a central role in guarding hepatocytes from apoptosis. Hepatocellular carcinoma have been reportedly defined by the use of antibodies that recognize only cytokeratins 8 and 18. K18 Ser33 as an interphase phosphorylation site, which increases its phosphorylation during mitosis in cultured cells and regenerating liver, and as an in vitro cdc2 kinase phosphorylation site. Phosphorylation of Ser33 and Ser52 are involved in keratin subcellular distribution.

PURIFICATION

The Rabbit IgG is purified by Epitope Affinity Purification

FORMULATION

This affinity purified antibody is supplied in sterile Phosphatebuffered saline (pH7.2) containing antibody stabilizer

SPECIFICITY

This antibody recognizes CK18 without a phosphorylation site of Ser33.

STORAGE

The antibodies are stable for 24 months from date of receipt when stored at -20oC to -70oC. The antibodies can be stored at 2oC-8oC for three month without detectable loss of activity. Avoid repeated freezing-thawing cycles.

APPLICATIONS/SUGGESTED WORKING DILUTIONS*

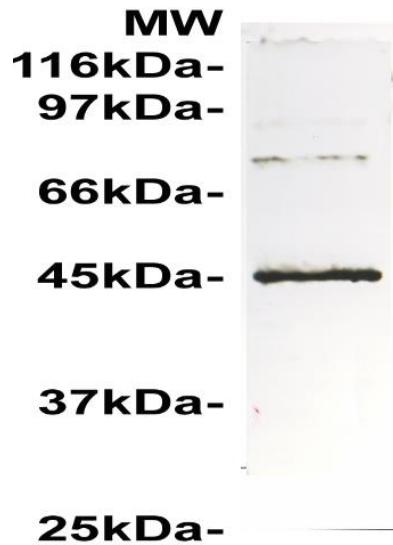
- Western Blot: 0.1-1 µg/ml
- ELISA: 0.01-0.1 µg/ml
- Immunoprecipitation: 2-5 µg/ml
- IHC: 2-10 µg/ml
- Flow cytometry: Not tested
- Molecular Weight: 48.0
- Positive Control: Kidney Tissue
- Cellular Location: Cell Membrane

*Optimal dilutions should be determined by researchers for the specific applications.

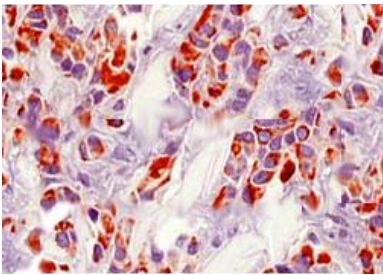
FOR RESEARCH USE ONLY.

AbboMax, Inc 2528 Qume Drive, Suite 8, San Jose, California 95131, USA
1 408-573-1898 (Tel). 1 408-573-1858 (Fax). www.abbomax.com info@abbomax.com

DATA ATTACHMENTS



Western Blot: The whole cell lysate derived from A431 was immunoblotted by Rabbit anti CK18 (Paired 33) (Cat#630-120) antibody at 1:500, an immunoreactive band around ~48kDa is observed.



Immunohistochemistry: Human breast cancer (FFPE) stained with Anti-Keratin 18 (Paired 33) antibody, (Cat# 630-120) at 1:200 for 10 min @ RT. Staining of formalin-fixed tissue requires boiling tissue sections in 10 mM Citrate Buffer, pH 6.0 for 10 min followed by cooling at RT for 20 min.

REFERENCES

FOR RESEARCH USE ONLY.